

# COMPANY PROFILE

20  
25

01	WHO WE ARE	
	• ABOUT US	04
	• MANAGING DIRECTOR	06
	• OUR HISTORY	08
	• GLOBAL PRESENCE	12
	• SABBOUR IN NUMBERS	13
02	OUR EXPERTISE	14
03	OUR PROJECTS	
	• RESIDENTIAL	16
	• COMMERCIAL & MIXED USE	20
	• INFRASTRUCTURE	22
	• TRANSPORTATION	23
	• PUBLIC BUILDINGS	24
	• HIGH RISE	26
	• HOSPITALITY	28
	• HEALTH CARE	30
	• BANKING	31
	• EDUCATION	32
	• SPORTS & LEISURE FACILITIES	34
	• INDUSTRIAL	36
04	CERTIFICATIONS	38



## About Us..

**S**abbour Consulting is one of the leading multidisciplinary engineering consulting firms in the region.

Since its establishment in 1957, Sabbour Consulting has been providing engineering consultancy services, and over the past 67 + years, our consistent internal development and unwavering commitment to the highest standards of quality have positioned us as a trusted partner on numerous projects across the region, including some of the most complex and ambitious. We have successfully delivered a diverse range of multidisciplinary projects, both in Egypt and abroad, serving a broad client base that includes governmental organizations, NPOs, and private sector.



## Our Expertise

Sabbour Consulting offers a comprehensive suite of services, including innovative and sustainable design solutions across multiple disciplines—architectural, landscape, urban & master planning, structural, civil, MEP, roads, facade, and more. We also provide high-quality construction supervision, expert project management, and precise valuation. In addition, we offer specialized third-party services such as cost control, quantity surveying (QS), and value engineering to ensure financial efficiency and project optimization.

Our multidisciplinary team ensures functional efficiency, environmental responsibility, and timely project delivery—helping clients achieve optimal performance and long-term value across every stage of development.

# 1957

## Vision

To be the leading expert in high-quality consultancy services in Egypt and to have a significant share of target markets outside of Egypt.



## Mission

Serving and developing communities through the provision of high-quality engineering consultancy services up to the international standards.



## Core Values

Our core values are the foundation of every project we undertake, driving us to deliver excellence and ensure the highest standards of quality in everything we do

### Collaboration

We foster strong partnerships and teamwork, both internally and with clients, to achieve exceptional results.

### Commitment & Credibility

Our unwavering dedication to reliability and integrity ensures that we consistently deliver results you can trust.

### Loyalty

We value lasting relationships, grounded in trust and mutual respect, with clients, stakeholders, and partners.

### Creativity

We embrace innovative thinking and tackle every challenge with creative solutions that are not only effective but also tailored to meet the unique needs of each project.

# Managing Director..

**Omar Hussein Sabbour is the Chief Executive Officer of Sabbour Consulting,** following in the footsteps of his father, a renowned engineering figure and the founder of Sabbour Consulting. Omar has adeptly navigated diverse strategic development initiatives, contributing significantly to the company's market share and overall positioning.



**With over 25 years** of experience in engineering consultancy, real estate development, and construction, Omar began his career as a site engineer and progressed to the role of Project Manager, making valuable contributions to various construction projects.

**In addition to his role as CEO,** Omar is a board member of Al-Ahly Sabbour Real Estate Development and Al-Ahly for Mortgage Finance, where he also serves on the internal audit committee. He was previously the Chairman of Massar Company for Educational Buildings.

**Actively engaged in the Egyptian Business and Construction community,** Omar is a member of various associations, including The Egyptian Junior Businessmen Association (where he chaired the board from 2011 to 2013), The Egyptian Businessmen Association (where he served as head of Engineering Consultancy committee), The German Chamber of Commerce, The American Chamber of Commerce, and The British Business Association in Egypt.

**As a strong advocate for corporate social responsibility,** Omar has been involved in non-profit organizations such as Mawadda and Sabbour Foundation. He led the Corporate Social Responsibility committee in The Egyptian Junior Businessmen Association for two consecutive years.

**Beyond his professional accomplishments,** Omar has a notable athletic background, being a former international judo champion.

# Leadership With Vision

## Strategic Penetration: Expanding Reach in Key Regional Markets

**Under the visionary of Eng. Omar Sabbour,** Sabbour Consulting has entered a dynamic phase of regional expansion, establishing a strong and rapidly expanding presence across the evolving landscapes of Gulf and Africa. This strategic growth is driven by the rising demand for our integrated consultancy services—built on our longstanding reputation for quality, reliability, and an unwavering commitment to innovation and advanced technologies.

Today, Sabbour Consulting operates permanent offices in key markets, including Oman and United Arab Emirates. Additionally, we maintain a strong presence across several high-potential African markets, enabling us to deliver tailored, high-impact solutions that address the unique requirements of diverse development sectors.

A defining milestone in our 2025 regional growth strategy is our expansion into the Kingdom of Saudi Arabia. This strategic step marks a major milestone, positioning Sabbour Consulting to play an instrumental role in supporting the Kingdom's ambitious national transformation agenda—most notably, Saudi Vision 2030.

**"This expansion represents an important strategic step, through which a permanent presence will be established in Saudi Arabia to serve as a launchpad for more projects. Sabbour Consulting seeks to play a pivotal role in delivering distinctive, future-focused projects that directly contribute to achieving Saudi Vision 2030."**

**— Eng. Omar Sabbour, CEO**

Our success across the Middle East and Africa is rooted on the seamless integration of technical excellence and local market intelligence. This unique synergy empowers us to strengthen our position within these dynamic markets, solidifying our role as a trusted partner in advancing sustainable urban development and smart infrastructure throughout the region.

# Our History

## OUR FOUNDER

### ENG. HUSSEIN SABBOUR

Hussein Faiek Sabbour, a visionary leader, the Chairman of Sabbour Consulting, Al-Ahly Sabbour Developments, Mohandes Bank and various engineering-related companies, including Al-Ahly Urban Investment Co. and Platinum Co. Sporting & Recreational Activities.



**Formerly Chairman** of The Egyptian Businessmen's Association and a board member of several esteemed organizations, his multifaceted influence extended across consulting, business, and finance. Beyond his corporate roles, he chaired entities like The Table Tennis Association and The Egyptian Shooting Club, showcasing a commitment to sports and social activities.

**Mr. Hussein Sabbour started his journey in 1957**, founding Sabbour Consulting as one of Egypt's pioneering engineering consultancy firms. He perceived challenges as opportunities, played a pivotal role in the architectural development and enhancement of engineering consulting services. Under his stewardship, Sabbour Consulting actively participated in several mega projects, notably contributing to the Cairo underground metro and the urbanization of new cities in Egypt, including October City and Sadat City.

**His extensive knowledge and industry expertise** significantly contributed to the rapid growth and enduring success of Sabbour Consulting. His leadership played a central role in some of the most significant architectural transformations over the years.

**A role model to many in the industry**, his dedication remained unwavering until his last day. Sadly, Mr. Hussein Sabbour passed away in February 2021, leaving behind a lasting legacy of innovation, leadership, and impactful contributions to the Egyptian business and engineering landscape.

# 1957

## CO-FOUNDER

### ENG. NAGWA EL-KOUSSY

The strong and supportive Eng. Nagwa El-Koussy stands as a remarkable role model, inspiring others with her contributions and unwavering commitment to the field of engineering. She is one of the first pioneering female engineers to graduate from Cairo University,



as she embodies resilience and determination. She is one of the founders of Sabbour Consulting. She embarked on the journey alongside Eng. Hussein Sabbour right from the inception.

# 67

+ Years of Engineering



## 60s...

Sabbour Consulting was established by Eng. Hussein Sabbour in 1957. Over the past six decades, we have remained at the forefront of the engineering consultancy field, earning a distinguished reputation for our unwavering commitment to excellence, quality, and reliability. In the 1960s, we began expanding our footprint beyond Egypt, establishing our first office in Libya. This strategic move reflected our dedication to serving a broader client base and delivering impactful, client-focused engineering solutions across borders. This expansion led to our prominent recognition in Libya where we actively participated in numerous projects.



## 80s...

In the 1980s, Sabbour Consulting was entrusted by the Egyptian government with the strategic development of master plans for several new cities, including 6th of October and New Beni Suef. These visionary projects encompassed the planning and design of integrated residential, commercial, and industrial zones, along with vibrant public spaces, parks, and essential community facilities. This era marked a milestone in Sabbour Consulting's journey—positioning the firm as a key player in shaping Egypt's urban future and reinforcing its leadership in large-scale urban planning and development.



## 70s...

Fueled by the visionary leadership of Eng. Hussein Sabbour, the 1970s marked a transformative decade for Sabbour Consulting. His unwavering commitment to excellence played a pivotal role in shaping the infrastructure and transportation networks of key cities across the region. During this period, the firm saw a significant expansion in its client base, engaging with a diverse range of sectors and industries. Strategic collaborations and high-impact partnerships became a cornerstone of Sabbour's growth strategy, further cementing our reputation as a trusted name in engineering consultancy and paving the way for broader market influence.



## 90s...

The 1990s marked a significant chapter of growth and geographical expansion for Sabbour Consulting. We extended our reach across Africa, from Mauritania to Ghana to Mali, establishing a strong presence on the continent. During this time, we also played a pivotal role in shaping Egypt's transportation infrastructure, contributing to the development and establishment of Metro Lines 1 and 2. These strategic projects not only strengthened our reputation as leaders in transportation consultancy but also showcased our ability to deliver large-scale, high-impact solutions across diverse regions.

## 2000...2010

The 2000-2010 era saw Sabbour Consulting play a key role in shaping Egypt's urban development, particularly in addressing the increasing demand for high-quality housing in Cairo and other cities. Our expertise in residential design and construction made us a trusted partner for developers creating successful and sustainable residential projects in Egypt and beyond. Furthermore, we were involved in the master planning and development of new cities, including Sadat City, contributing significantly to the growth of Egypt's urban landscape and establishing vibrant, sustainable communities that have become important economic and social centers.



## 2011...2020

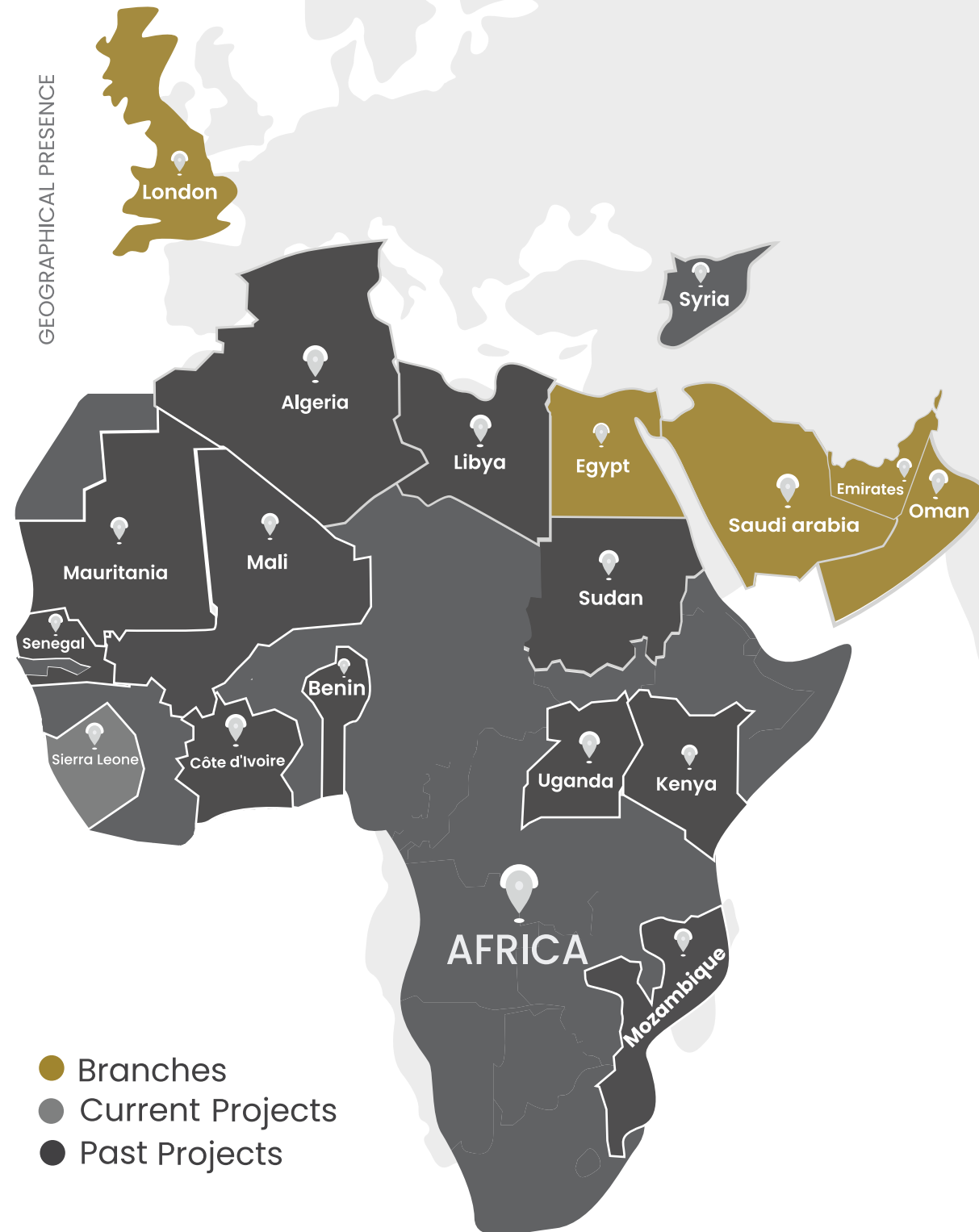
Between 2011 and 2020, Sabbour Consulting solidified its reputation as a trusted partner for government and public sector projects, playing a pivotal role in shaping Egypt's modern infrastructure and urban expansion. Key projects during this decade included the New Administrative Capital, a transformative effort to ease congestion in Cairo, and Alamein New City, developed to boost tourism and drive regional economic growth. This period also marked Sabbour Consulting's regional expansion with the establishment of its Oman office, further reinforcing the firm's status as a house of expertise dedicated to excellence and innovation.



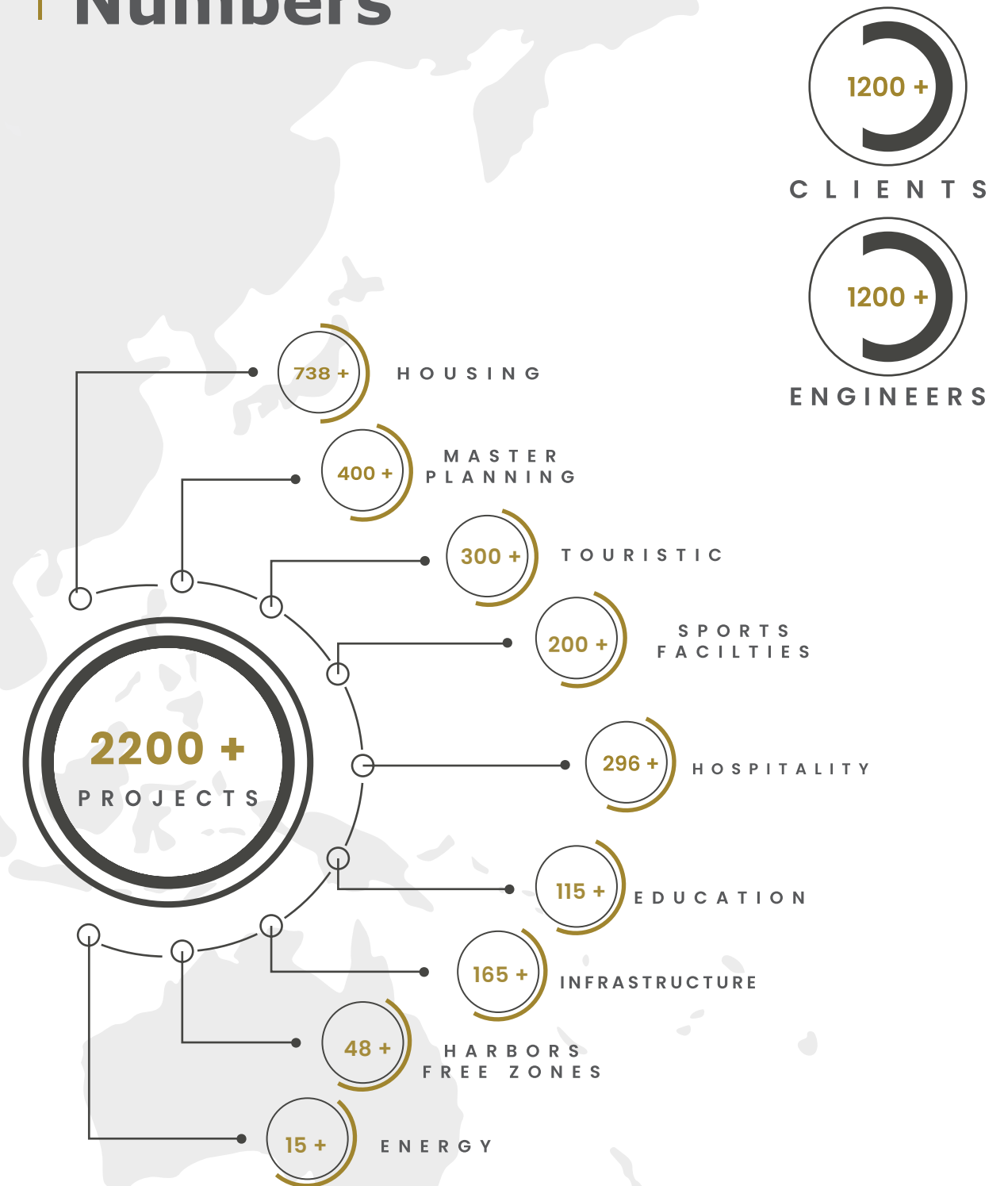
## 2020...2024

Despite the global challenges brought on by the pandemic, Sabbour Consulting was one of the engineering consultancy firms that has been contracted by the Egyptian government to provide design and engineering services for El Dabaa Nuclear Power Plant—Egypt's first nuclear power plant—located along the Mediterranean coast in Matrouh Governorate. During this period, Sabbour Consulting also accelerated its expansion across the Gulf and Africa, driven by several factors, including the increasing demand for its services in these markets, a strong reputation for quality and reliability, and a continued focus on innovation and advanced technology.

## Global Presence



## Sabbour in Numbers





# Our EXPERTISE

## 01 Design Services

At Sabbour Consulting, design has always been a core priority. Our team specializes in delivering high-quality, efficient designs that meet the highest industry standards. We focus on achieving optimal functionality while considering the surrounding economic factors, environmental impact, and ecosystem balance. Our approach is grounded in sustainable design and value engineering, ensuring long-term client satisfaction and environmental responsibility. Our key design disciplines include Architecture, Structural Engineering, Urban Planning & Landscape Design, Infrastructure, and MEP (Mechanical, Electrical & Plumbing).

## 02 Construction Supervision

At Sabbour Consulting, we are dedicated to providing high-quality construction supervision services that ensure project success from start to finish. Our role is to prevent delays, avoid errors, and enhance the overall effectiveness of the construction process while maximizing the return on investment (ROI) for our clients. We help identify potential issues early—before they escalate into costly or time-consuming problems. Our experienced teams are equipped to reduce technical risks, prevent construction errors, manage budgets efficiently, and ensure projects are delivered on time. To uphold the highest standards, we conduct regular site audits and monitor all teams to ensure strict adherence to established procedures and quality control measures.

## 03 Project Management

At Sabbour Consulting, our engineering experts combine technical knowledge with strong leadership, interpersonal, and communication skills to ensure effective project management. We oversee every aspect of the project—from planning and coordination to execution—ensuring it is completed on time, within budget, and to the highest quality standards. Our project managers play a critical role in aligning all teams and resources to deliver successful outcomes with precision and efficiency.

## 04 Valuation & Development Consultancy

At Sabbour Consulting, we focus on determining the economic worth of assets, projects, and businesses, leveraging our engineering and technical expertise. Our valuation services provide accurate, reliable insights to guide decision-making and ensure optimal outcomes for our clients.

## Building Information Technology

At Sabbour Consulting, we leverage cutting-edge BIM technology to enhance workflows, increase productivity, and deliver high-quality outputs that meet industry and international standards. Our BIM implementation streamlines project management by utilizing site construction simulations for effective time and cost management. By seamlessly integrating BIM with cloud technology, we ensure business resilience, enabling enhanced collaboration and real-time data sharing across all project teams. This innovative approach allows us to optimize project outcomes, keeping us at the forefront of technological advancements in the industry.

## Our Sectors

- Residential • Commercial & Mixed Use
- Sports & Leisure Facilities • High Rise
- Infrastructure • Transportation
- Public Building • Hospitality
- Health Care • Education
- Banking
- Industrial



# 01 Residential

We have played a significant role in shaping and contributing to residential projects in Egypt and beyond. Our role typically encompasses several aspects of the project lifecycle. From luxury condominiums to suburban housing communities, and from urban high-rises to villa compounds, Sabbour Consulting has demonstrated its prowess in contributing to all forms of residential development.



**J'noub**

**Plot Area:** 39 Acres

**Scope:**

Packages Of Electromechanical Works

Design Includes:

- Electrical Design ,Sanitary, and Air-conditioning Works For Buildings
- HVAC, Fire Fighting, Lighting, Power, Fire Alarm, Sound, CCTV... Etc.)
- Electrical & Communication Networks ( Infrastructure)
- Irrigation & Lighting Systems
- Solar Systems
- Sewage Treatment Station
- Road Network

**Project Location:** New Administrative Capital, Egypt



**District 5 Residential**

**Plot Area:** 100 Acres

**Scope:**

Construction supervision for site infrastructure networks :

- Road network
- Landscape irrigation networks
- Water supply networks including water reservoirs and pumping station
- Sewage network including pumping stations
- Electrical networks and sustentations
- External lighting networks
- Telecommunication networks

**Project Location:** New Kattameya, Egypt



**Layan**

**Plot Area:** 227 Acres

**Scope:**

- Design coordination
- Architectural Design review
- Permit drawings
- Detailed design (structural, MEP)
- Site infrastructure design
- Tender documents
- Tendering process administration
- Construction Supervision

**Project Location:** New Cairo,Egypt



**City of Odyssia**

**Plot Area :** 580 Acres

**Scope :**

- Project management
- Permit documents
- Tender documents
- Construction supervision

**Project Location:** Mostakbal City, Egypt



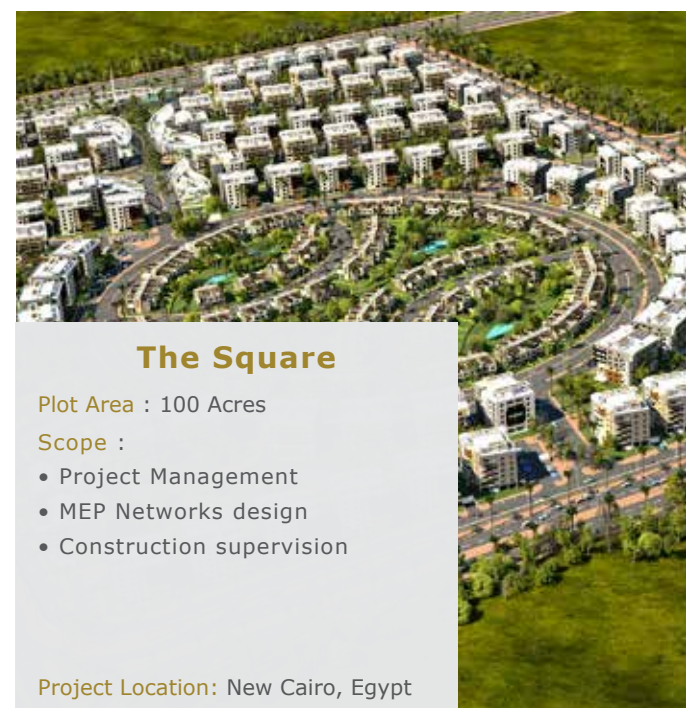
**THE RIDGE**

**Plot Area :**220 Acres

**Scope :**

- Technical coordination and follow-up
- Design works including:
  - Design development for the residential part
  - Design development for the landscape
  - Infrastructure networks
- Permit drawings
- Detailed design
- Tender documents

**Project Location:** Mostakbal City, Egypt



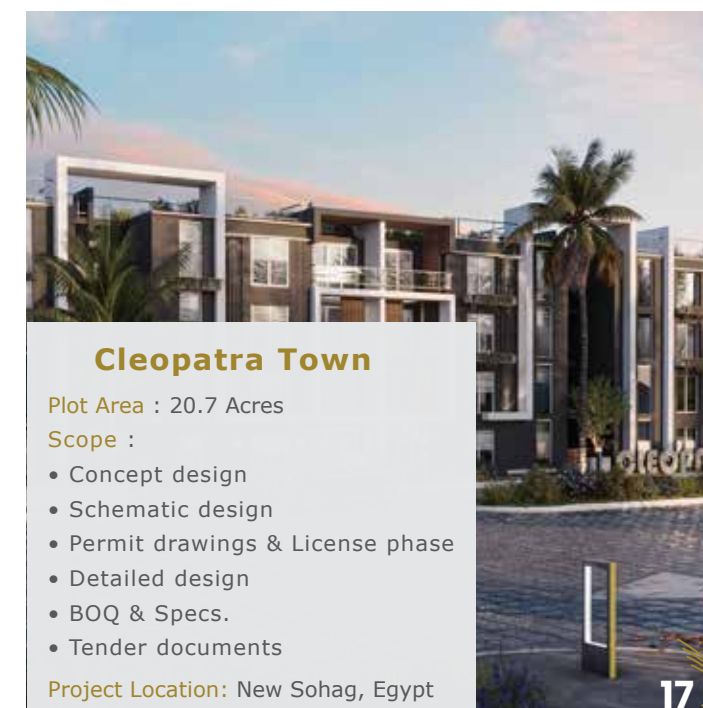
**The Square**

**Plot Area :** 100 Acres

**Scope :**

- Project Management
- MEP Networks design
- Construction supervision

**Project Location:** New Cairo, Egypt



**Cleopatra Town**

**Plot Area :** 20.7 Acres

**Scope :**

- Concept design
- Schematic design
- Permit drawings & License phase
- Detailed design
- BOQ & Specs.
- Tender documents

**Project Location:** New Sohag, Egypt



UP Town Cairo – Emaar Square

Plot Area : 240,000 m2

Scope :

- Data collection and studies
- Schematic design (Architectural, structural, MEP)
- Architectural Design development
- Structural Design development
- Detailed structural design
- Permits issue technical follow-up

Project Location: Cairo, Egypt



TROJENA NEOM PROJECT

CONSTRUCTION VILLAGES (WAVE 2) (20+K Villages)

Built-Up Area :

- 12,300 beds + Initial Phase
- 6,666 beds + Future expansion
- 1,323 beds (Operation & Maintenance)

Total Beds: 20,289 beds

Scope :

- Full design services (infrastructure and buildings)
- Full BIM services (LOD300/ LOD400 / LOD500)
- Technical Support During Construction Works

Project Location : Trojena - Neom, KSA



Neom Residential Community 1,2

Plot Area:

- 10K Village With an approximate area of 800,000 m2 (BUA 167,000 m2)
- 5K Village With an approximate area of 401,000 m2 (BUA 99,000 m2 )

Scope:

- Full Design Services (infrastructure and buildings)
- Full BIM services (LOD300 / LOD400 / LOD500)
- Technical Support During Construction Works

Project Location: NEOM, KSA



Rukan

Plot Area : 62 acres

Scope :

- Design development
- Detailed design
- Tender documents

Project Location: Dubai, United Arab Emirates



# 02 Commercial & Mixed Use

We have made a significant impact in commercial and mixed-use buildings, showcasing our proficiency in creating dynamic and versatile spaces. Our involvement in these projects underscores our expertise in seamlessly blending different functions, which results in innovative and functional spaces that enhance urban environments.

## Mindhaut

Plot Area: 60,000m<sup>2</sup>

Scope:

- Construction supervision for Civil
- Finishes and MEP work

Project Location: New Kattameya, Egypt



## Mastro Mall

Plot Area: 5248.36 m<sup>2</sup>

Scope:

- Design review for (architectural, structural, and electromechanical) designs
- Construction supervision

Project Location: New Administrative Capital, Egypt



## OIA Mall

Built-Up Area: 26,500 m<sup>2</sup>

Scope:

- Preliminary design
- Permit drawings
- Detailed design
- Tender documents

Project Location: New Administrative Capital, Egypt



## Zaha Mall

Plot Area: 7,500 m<sup>2</sup>

Scope:

- Preliminary design
- Schematic design
- Permit drawings
- Detailed design
- Tender documents

Project Location: New Administrative Capital, Egypt

## One Ninety

Plot Area: 82 Acres

Scope:

- Construction management
- Construction supervision

Project Location: New Cairo, Egypt



## WEST ELEVEN MALL

Plot Area: 20,000 m<sup>2</sup>

Scope:

- Construction supervision

Project Location: 6th of October City, Egypt





# 03 | Infrastructure

We have played a crucial role in the domain of infrastructure development, demonstrating our proficiency in establishing fundamental systems and structures that form modern societies. Our engagement in infrastructure projects spans a diverse array of roles, underscoring our substantial contributions to enhancing connectivity, sustainability, and the overall progress of communities.



## Installation of Navigation Equipment for 21 Airports

- Scope :
- Site assessment
  - Topographic survey
  - Geotechnical investigations
  - EIA
  - Design adjustment to local norms and regulations
  - Civil works design (steel towers of different heights and technical buildings)
  - Electrical and communication system design
  - Permit drawings preparation
  - Preparation of technical specifications
  - Preparation of BOQs
  - Preparation of Tender documents
  - Construction supervision

Project Location: Egypt



## Container and Cargo Terminal in the Second Basin

- Plot Area : 28.7 Acres
- Scope :
- Master plan Review
  - Recommendation for master planning, upgrading and adjustment
  - Technical support for dredging and land reclamation
  - Design review for marine structure, buildings, facilities and infrastructure, etc..
  - Construction supervision

Project Location: Ain Sokhna, Egypt



## Infrastructure Networks for North-west area at New Alamein city

- Plot Area : 3,500 Acres
- Scope :
- Site Survey
  - Traffic studies
  - Schematic designs
  - Detailed designs
  - Tender documents

Project Location: North Coast, Egypt



## Smart Networks at New Administrative Capital

- Coverage Area : Over 40,000 acres (Phase 1) serving zones R1, R2, R3, R4, R5, R6, R7, R8, mixed-use zone, major hubs, green belt zone and its surroundings.
- Scope :
- Design review
  - Design validation
  - Construction supervision
- Project Location: New Administrative Capital, Egypt

# 04 | Transportation

We have taken an active role in the transportation sector, making notable contributions to the improvement and efficiency of transportation systems, and have consistently demonstrated our influence in refining their functionality and performance.



## Tikonko Junction and Matru Jong Road

- Total Length: 72.6 km
- Scope :
- Pre-construction stage:
    - Review of preliminary design
    - Design development
    - Tender documents
  - Preliminary designs for Bumpeh's bridge
  - Construction stage:
    - Construction supervision

Project Location: Sierra Leone, West Africa

## Cairo UnderGround Metro line 1&2

Helwan – ElMarg & Shoubra – Giza

This project covers the development and execution of Cairo Metro Line 1 and Line 2, key components of Greater Cairo's underground metro network.

- Line 1:** Helwan – El Marg
- Total Length: 44.3 km
- Underground Section: 4.5 km
- Number of Stations: 33
- Line 2:** Shoubra – Giza
- Total Length: 21.6 km
- Underground Section: 13 km
- Number of Stations: 20

- Scope:
- Line 1**
- Survey of existing lines and identification of impact of construction works
  - Geotechnical investigations
  - Supervision of lines transferring and demolishing works
  - Survey of existing buildings situated in project dilapidation and settlement survey of buildings situated in project influence zone
  - Supervision the implementation of structural repair / reinforcement works
  - Traffic studies



- Scope:
- Line 2**
- Project management
  - Coordination between involved contractors
  - Site works management
  - Supervision of execution works: Civil works, dewatering, and MEP works

Project Location: Cairo, Egypt



# 05 Public Buildings

We actively partnered with the Egyptian government, demonstrating our dedication to the development of public buildings. Our engagement is evident in the conception and execution of notable public structures, emphasizing our contribution to shaping impactful community spaces.

## New Cairo City Authority

Plot Area: 22,684 m2

### Scope:

- Master plan
- Preliminary design
- Permit drawings
- Detailed design
- Tender documents
- Construction supervision

Project Location: New Cairo, Egypt



## The Council of Ministers

Plot Area: 15 acres

### Scope:

- Concept design
- Preliminary design
- Permit drawings
- Detailed design
- special interior design
- Tender documents
- Construction supervision

Project Location: El-Alamein, North Coast, Egypt



## Shell Administration Building

Gold LEED Certified

Built-Up Area: 800 m2

### Scope:

- Concept design
- Preliminary design
- Permit drawings
- Detailed design
- Tender documents
- Construction supervision

Project Location: Egypt



## WE Telecom Egypt

Plot Area :Ground floor + Mezzanine designated for sales outlet and services

7 typical floors designated for call center

3 floors to be used for administrative purposes

The area of each floor is 2600 m2

### Scope :

- Data collection
- Detailed design (architectural, structural, MEP, interior)
- Tender document
- Tendering process administration

Project Location: Cairo, Egypt



## Administrative Building of the Economic Special Zone

Plot Area : 96,000 m2

### Scope :

- Construction management
- Construction supervision

Project Location: Ain Sokhna, Egypt



## Administration Building

Plot Area: 1000 m2

### Scope:

- Site studies
- EIA
- Concept design
- Preliminary design
- Detailed design
- Preparation of tender documents
- Construction supervision

Project Location: Cotonou, Benin



# 06 High Rise

We have established a notable presence in high-rise architecture and engineering, with extensive involvement in numerous tower projects, demonstrating our expertise in designing, planning, and engineering iconic vertical landmarks.



### Misr Nile Tower

**Built up Area:** 400,000 m2

**Scope:**

- Marketing study
- Feasibility study
- Traffic study
- Concept design
- Preliminary design
- Permit drawings
- Design development
- Detailed design
- Tender documents

**Project Location:** Cairo, Egypt



### PODIA Tower

**Built up Area:** 12,500 m2

- 3 levels covering the entire plot (36,000 m²)
- Ground Floor + 25 Typical Floors (60,000 m²)

**Scope:**

- Construction supervision

**Project Location:** New Administrative Capital, Egypt



### Quan Iconic Tower

**Built-up Area:** 10,510 m2,  
25 floors with a total height of 100 m

**Scope :**

- Construction supervision

**Project Location:** New Administrative Capital, Egypt



### I Business Park Tower

**Plot Area:** 4 acres

3 smart mixed-use towers, common panorama floor connecting all 3 towers with 20 typical floors with 91 meters heights

**Scope:**

- Preliminary design
- Permit drawings
- Detailed design
- Tender documents
- Construction supervision

**Project Location:** New Administrative Capital, Egypt



### Continental Tower

**Built-up Area:**43,500m2  
29 typical floors

**Scope:**

- Project management

**Project Location:** Dubai, United Arab Emirates



### El Salam Tower

**Built-up Area:**36 floors towers with total height of 155 meters.

Podium of 12 floors, 9800 m2 per floor  
22 floors for residential facilities in tower "A" and tower "C", 5300 m2 per floor  
Circular restaurant on tower "C", area of 1500 square meters.  
Helicopter landing pad above the circular restaurant.

**Scope:**

- Project management
- Construction supervision

**Project Location:** Alexandria, Egypt



### Cairo Plaza

**Plot Area :** 2 towers with 38 floors each  
**Scope:**

- Structural repair works for north & south towers
- Installation of 10 new elevators
- Electrical Systems design
- Plumbing systems design
- Fire alarm & Fire fighting systems design
- Data & sound network design
- Computer system design
- HVAC design
- Interior design
- Detailed drawings
- Tender documents
- Supervision of repair & renovation works

**Project Location:** Cairo, Egypt



# 07 Hospitality

We have played a notable role in the hospitality and second homes sector, showcasing our expertise in delivering exceptional results. Our involvement in this realm encompasses a diverse range of functions, underscoring our significant contributions to creating luxurious and welcoming spaces for travelers and those seeking secondary residences.

## Sofitel



Plot Area :10,000 m2

### Scope:

- Construction management
- Construction supervision

Project Location: Cairo, Egypt

## Semiramis



Plot Area :10,000 m2

### Scope :

- Design development
- Tender documents
- Project management
- Construction supervision

Project Location: Cairo, Egypt

## MovenPick Hotel



Plot Area :25,000 m2

### Scope :

- Project management
- Tender documents
- Construction supervision

Project Location: Quseir-Red Sea, Egypt



## Gaia

Plot Area :1.2 Km2

### Scope :

- Design review
- Preliminary design
- Detailed design
- Tender documents
- Construction management
- Construction supervision

Project Location: North Coast, Egypt



## Topaz

Plot Area: 26 acres

### Scope:

- Project management
- Construction supervision

Project Location: Ain Sokhna, Egypt



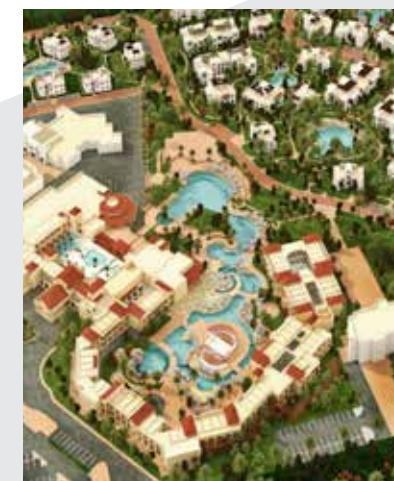
## Amwaj

Plot Area : 528 acres

### Scope :

- Master plan
- Concept design
- Detailed design
- Tender documents
- Construction supervision

Project Location: North Coast, Egypt



## Sunterra

Plot Area: 47 acres

### Scope:

- Project management
- Construction supervision

Project Location: Sharm El Sheikh, Egypt



## Hampton by Hilton

Plot Area : 13,500 m2

### Scope :

- Stage (3A): Concept design
- Stage (3B): Developed design
- Stage (3C): Detailed design
- Stage (3D): Tendering stage and IFC
- BIM model
- Technical support during construction works

Project Location: Neom, KSA



## Piacera

Plot Area : 78 acres

### Scope :

- Project management
- Construction supervision

Project Location: Ain Sokhna, Egypt



# 08 Health Care

We have contributed to the development of healthcare facilities, ensuring functional and well-designed spaces that support medical services and patient care. Our expertise has played a role in shaping hospitals and medical centers that prioritize efficiency, safety, and comfort.



## Extension of Saudi German Hospital

**Plot Area:** Construction of two additional floors with an area of 3100 m<sup>2</sup> /floor.

### Scope :

- Design review
- Design amendment and completion
- Permit drawings
- Tender documents
- Construction supervision

**Project Location:** Cairo, Egypt



## Ain Shams Hospital

**Plot Area:** 70,000 m<sup>2</sup>

### Scope:

- Project management
- Master planning • Architectural design • Structural design
- Construction supervision
- Preparation of technical specifications • Preparation of BOQ for the project • Electromechanical systems design • Tender documents • Detailed drawings
- Interior design

**Project Location:** Cairo, Egypt



## Aswan General Hospital

**Plot Area:** 15,000 m<sup>2</sup>

### Scope:

- Review detailed designs
- Construction supervision

**Project Location:** Aswan, Egypt



## Extension of Abbassia Fever Hospital

**Plot Area:** 4,000 m<sup>2</sup>

### Scope:

- Project management
- Architecture drawing
- Interior design
- Structural design
- MEP drawings
- Communications systems design
- Detailed design
- Tender documents

**Project Location:** Cairo, Egypt

# 09 Banking

In the banking sector, we have played a significant role, leveraging our expertise and insights to support the financial industry. We have contributed to a wide range of large-scale banking institutions.



## Central Bank of Egypt

Renovation of two historic buildings of the Central Bank of Egypt

### Cairo Headquarter Scope :

- Building assessment
- Proposed interior design and furniture selection

### Alexandria Headquarter Scope :

- Site inspection
- Building assessment
- Detailed design
- Preparation of tender documents
- Supervision of renovation works

**Project Location:** Cairo and Alexandria, Egypt

## National Bank of Egypt

Renovation and development of two National Bank of Egypt branches located in Heliopolis district:

- New Nozha
- Hegaz

### Scope :

- Preliminary design
- Detailed architectural and engineering design
- Preparation of tender documents
- Construction supervision during implementation

**Project Location:** Cairo, Egypt



## Afrexim Bank

**Built-up Area:** 2B+G+9 floors, the area of floor is about 900 m<sup>2</sup>

### Scope :

- Design validation and review
- Redesign of building engineering systems
- Interior design
- Tender documents for floors (2nd, 5th and 7th)
- Tendering process administration
- Construction management
- Construction supervision

**Project Location:** Cairo, Egypt



# 10 Education

We have played a pivotal role in the education sector, designing innovative environments that foster effective teaching, learning, and collaboration.



## Arab Open University

Development of multiple Arab Open University branches

### Scope :

- Master plan
- Concept design
- Design development
- Tender documents
- Tendering process administration
- Construction supervision

### Project Location:

- Bahrain branch
- Egypt branches: El-Shorouk, and Burg Al-Arab

## King Abdullah University

Plot Area: 100,340 m2

### Scope :

- Master plan
- Design criteria according to university international design criteria

Project Location: El Galala Mountain, Ain Sokhna, Egypt



## Sinai University

Comprehensive development and expansion of Sinai University across three branches

### Scope :

- Master plan
- Concept design

### Project Location:

- Egypt branches: El Arish, Al Qantara, and Al Obour



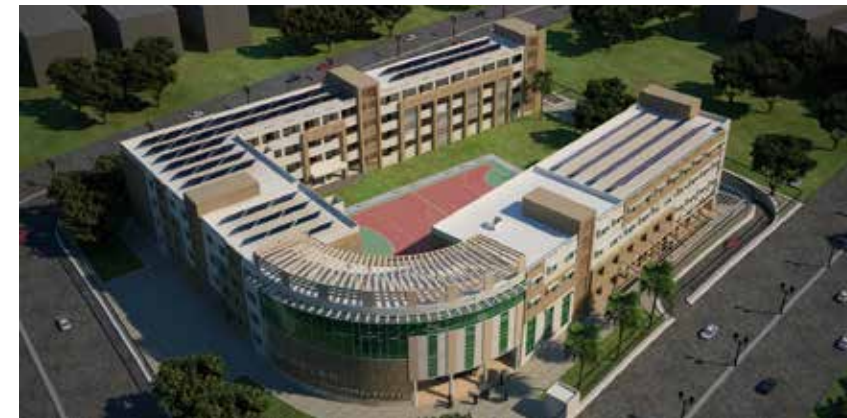
## El Alamein University

Plot Area: 50 Acres

### Scope:

- Master plan adjustment
- Design criteria according to university international design criteria

Project Location: El Alamein, North Coast, Egypt



## Hayat International School

Plot Area: 10,000 m2

### Scope :

- Site studies and sites preparation of engineering report
- Concept design
- Permit documents
- Detailed design (architectural / structural / electromechanical ...)
- Tender documents

Project Location: New Administrative Capital, Egypt

## Assiut Schools

Rehabilitation of 4 schools and construction of a new one in Abu Teeg District

### Scope:

- Structural assessment
- Problems identification
- Design for repair and rehabilitation works
- Detailed design for new school to be constructed for future development
- Tender documents
- Construction supervision
- Project management

Project Location: Governorate of Assiut, Egypt



## International School Educational Evolution

Plot Area: 5.5 Acres

### Scope :

- Preliminary design
- Detailed design
- Permit drawings
- Preparation of BOQ
- Tender documents
- Construction supervision

Project Location: New Giza, 6th of October City, Egypt



# 11 Sports & Leisure Facilities

Our involvement in high-profile sports facilities underscores our expertise in designing and developing exceptional athletic venues. We create dynamic environments that not only promote physical activity but also enrich the leisure experience, supporting the well-being and engagement of communities.

## Al-Ahly Sporting Club

Provided consultancy throughout the club's branches construction and development.

### Scope :

- Design
- Construction supervision

### Project Location:

- Egypt branches: New Cairo, Nasr City and El Sheikh Zayed



## Platinum Club

Plot Area : 28 Acres

### Scope:

- Project management
- Construction supervision

Project Location: New Cairo, Egypt



## The Egyptian Shooting Club

Managed and supervised the development of the club's branches.

### Scope :

- Development plan

### Project Location:

- Egypt branches: Dokki , Kattameya, 6th of October and Port Said



## Heliopolis Sporting Club

Plot Area: 55 Acres

### Scope:

- Project management
- Construction supervision

Project Location: Al Shorouk City, Egypt

## International Shooting Club

Plot Area: 464 Acres

### Scope :

- Preliminary design
- Permit drawings
- Detailed design
- Tender documents
- Construction supervision

Project Location: New Administrative Capital, Egypt



## Alex West Club

Plot Area : 30 Acres

### Scope :

- Concept design
- Master planning
- Preliminary design
- Detailed design
- Tender document
- Construction supervision

Project Location: Alexandria, Egypt



# 12 Industrial

Sabbour Consulting has played a vital role in a wide range of industrial projects. Our expertise and dedication have been the reason for the success of these initiatives. Whether in manufacturing, construction, technology, or any other industry, we have contributed consistently to demonstrate our valuable insights and skills. Our commitment to excellence and problem-solving abilities have left a lasting impact on these projects, which made us highly regarded in the industrial field.



## Semaf

Plot Area : 35.7 Acres

### Scope :

- Design development
- Detailed designs
- Construction supervision
- Supporting the issuing of factory's international license.
- construction of a new building over 1000 m2 for CNC workshop.

Project Location: Helwan, Egypt



## L'azurde Egypt

The existing building (71x34 m, G+2 floors) was transferred into Production building.

### Scope :

- Structural assessment of existing building to assure structural safety
- Design review
- Construction supervision

Project Location: Obour City, Egypt



## Polyethylene Pipes Factory

The production line for plastic pipes (up to 1600 mm) is in steel structure hangers (130 x 45 meter, 15 m height).

### Scope :

- Feasibility study
- Preliminary design
- Permit drawings
- Detailed design
- Tender documents
- Construction supervision

Project Location: Cairo, Egypt



## Shamla Pharmaceutical Factory

Pharmaceutical factory was designed in accordance with international Good Manufacturing Practice (GMP) standards.

### Scope :

- Design development
- Detailed design drawings
- Tender documents
- Tendering process administration

Project Location: Jeddah, KSA



## NBE Warehouse

Plot Area : 25 acres

### Scope :

- Topographic survey
- Structural assessment of existing buildings
- Detailed design for new facilities
- Permit drawings
- Tender documents
- Construction supervision

Project Location: Cairo – Ismailia desert road, Egypt



## Pharmaceutical Factory in Kampala

Plot Area : 4,000 m2

### Scope :

- Project management
- Design services for:
  1. Urban master plan works
  2. Full package of design for (warehouse extension, administration extension, roads, sewage, storm water, irrigation, electrical, underground water, fire tanks, pump room)
- Preparation licenses and permit documents
- Detailed design
- Tender documents
- Construction supervision

Project Location: Uganda



## Veterinary Vaccine Factory

Plot Area : 15,000 m2

### Scope :

- General master plan
- Permit drawings
- Executive drawings
- Tender documents
- Construction supervision

Project Location: 6th of October, Egypt



# Certifications

Our credibility is reinforced by internationally recognized certifications, global rankings, and prestigious industry awards that reflect our dedication to technical excellence, sustainable design, and innovative engineering.

## Certified to International Standards



## Globally Ranked Among the Best



## Award-Winning Expertise

### Big 5 Egypt Impact Awards 2025

Certified to Deliver. Recognized for Excellence.



Architecture Firm of the Year



Engineering Consultancy Firm of the Year



Residential Project of the Year –  
RARE & RIDGE Residential Complex, Egypt

These certifications reflect both our **organizational excellence** and the **strength of our project delivery**, and reinforce our position as a trusted partner in the region’s most ambitious developments.



# Branches

**Egypt (Head Office):** Arkadia Mall, 8th Floor, Nile Corniche, Cairo.

**Saudi Arabia:** Building 8458, Al Olaya District, Riyadh.

**Oman:** 5th Floor, Bank Sohar Building, Al Khuwair, Muscat.

**United Arab Emirates:** Office M1, Al Garhoud District, Deira, Dubai.

**United Kingdom:** 2nd Floor, Bristol Office, Westbury on Trym, Bristol, England.

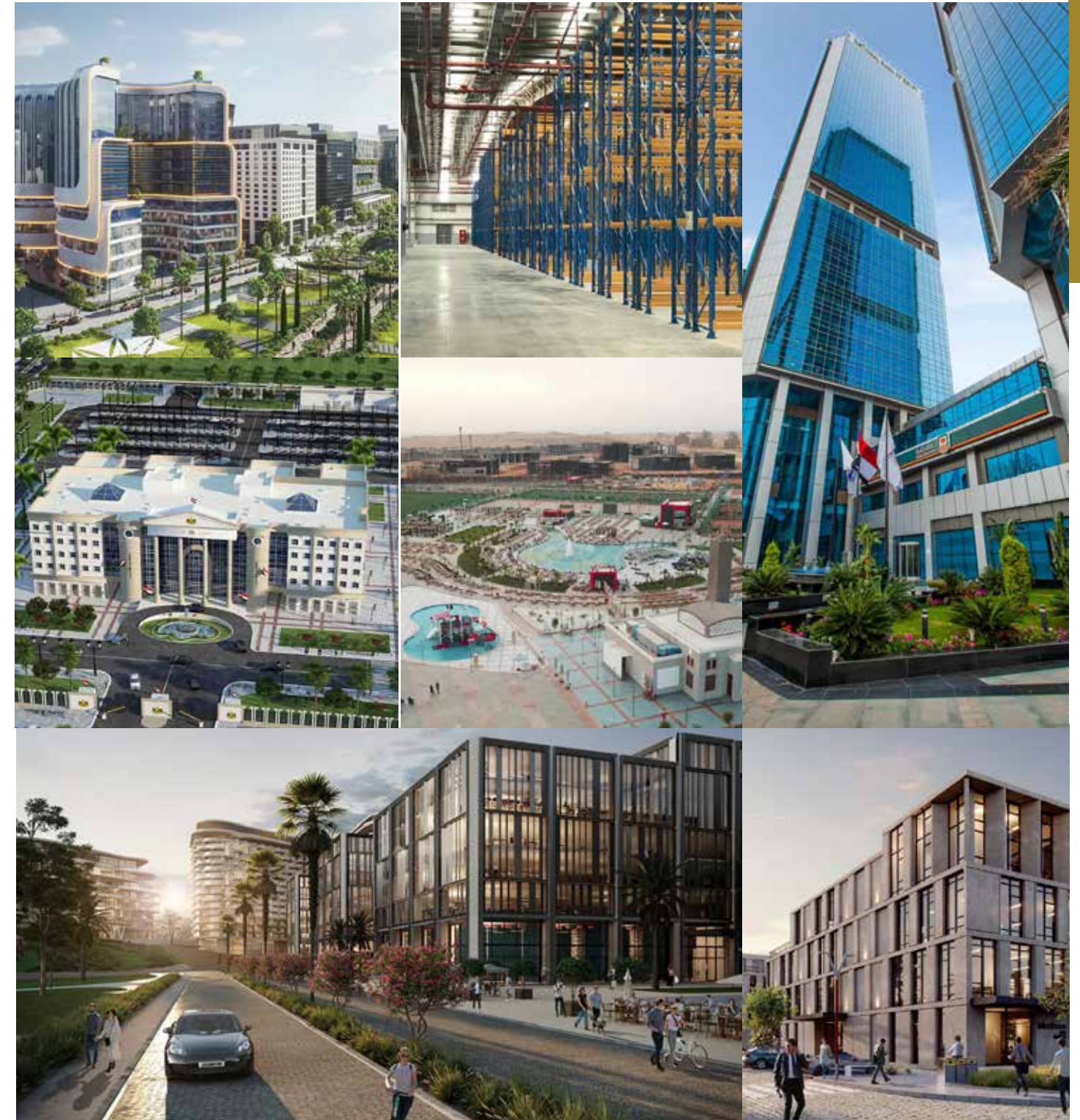
# Contact Us

**Email Address:** [Info@sabbour.com](mailto:Info@sabbour.com)

**Phone:** +(202)25749786 , +(202)25792082

**Fax:** +(202)25793327

**Website:** [www.sabbour.com](http://www.sabbour.com)



Building  
The Future Together



