


COMPANY PROFILE

SABBOUR CONSULTING



Building
The Future Together

CONTENT

01

WHO WE ARE

- ABOUT US 04
- MANAGING DIRECTOR 05
- OUR HISTORY 06
- GLOBAL PRESENCE 10
- SABBOUR IN NUMBERS 11

02

OUR EXPERTISE

12

03

OUR PROJECTS

- RESIDENTIAL 14
- COMMERCIAL & MIXED USE 16
- INFRASTRUCTURE 18
- TRANSPORTATION 19
- PUBLIC BUILDING 20
- HIGH RISE 22
- HOSPITALITY 24
- HEALTH CARE 26
- EDUCATION 27
- SPORTS & LESIURE FACILITIES 28
- BANKING 30
- INDUSTRIAL 31

04

CERTIFICATIONS

32

About Us..

Sabbour Consulting is one of the leading multidisciplinary engineering consulting firms in the region.

The company has been established since 1957; and for the past 65 years, Sabbour has witnessed a continuous cycle of internal development throughout the years. It has successfully conducted numerous multidisciplinary projects in Egypt and abroad for a range of different clients governmental organizations, NPO's, and private sector.

Our Expertise:

Project Management Services, Design Services including: (architectural, landscape, urban and master planning, structural, civil, MEP, roads, Facade ...Etc.), Construction Management Services, Contracts Supervision Services, Cost Control & QS Services, Value Engineering Services, and Valuation Services.

Mission

Serving and developing communities through the provision of high quality engineering consultancy services up to the international standards.

Vision

To be the leading expert in high quality consultancy services in Egypt and to have a significant share of target markets outside of Egypt and the MEA region.

Core Values

- Collaboration
- Commitment & Credibility
- Loyalty
- Creativity

Managing Director..

Omar Hussein Sabbour is the Chief Executive Officer of Sabbour Consulting,

following in the footsteps of his father, a renowned engineering figure and the founder of Sabbour Consulting. Omar has adeptly navigated diverse strategic development initiatives, contributing significantly to the company's market share and overall positioning. With over 25 years of experience in engineering consultancy, real estate development, and construction, Omar began his career as a site engineer and progressed to the role of Project Manager, making valuable contributions to various construction projects.



In addition to his role as CEO, Omar is a board member of AlAhly Sabbour Real Estate Development and AlAhly for Mortgage Finance , where he also serves on the internal audit committee. He was previously the Chairman of Massar Company for Educational Buildings.

Actively engaged in the Egyptian business and construction community, Omar is a member of various associations, including the Egyptian Junior Businessmen Association (where he chaired the board from 2011 to 2013), The Egyptian Businessmen Association (where he served as head of Engineering Consultancy committee)The German Chamber of Commerce, The American Chamber of Commerce, and The British Business Association in Egypt.

As a strong advocate for corporate social responsibility, Omar has been involved in non-profit organizations such as Mawadda and Sabbour Foundation . He led the Corporate Social Responsibility committee in the Egyptian Junior Businessmen Association for two consecutive years.

Omar has a notable athletic background, being a former international judo champion.

Our History

OUR FOUNDER

ENG. HUSSEIN SABBOUR

Hussein Faiek Sabbour, a visionary leader, the Chairman of Sabbour Consulting, Al-Ahly Sabbour Developments, Mohandes Bank and various engineering-related companies, including Al Ahly Urban Investment Co. and Platinum Co. Sporting & Recreational Activities Formerly Chairman of the Egyptian Businessmen's Association and a board member of esteemed organizations, his multifaceted influence extends across consulting, business, and finance. Beyond his corporate roles, he chaired entities like the Table Tennis Association and the Egyptian Shooting Club, showcasing a commitment to sports and social activities.

Hussein Sabbour started his journey in 1957, founding Sabbour Consulting as one of Egypt's pioneering engineering consultancy firms. He perceived challenges as opportunities, played a pivotal role in the architectural development and enhancement of engineering consulting services. Under his stewardship, Sabbour Consulting actively participated in several mega projects, notably contributing to the Cairo underground metro and the urbanization of new cities in Egypt, including October City and Sadaat City. His extensive knowledge and industry expertise significantly contributed to the rapid growth and enduring success of Sabbour Consulting. His leadership played a central role in some of the most significant architectural transformations over the years. A role model to many in the industry, his dedication remained unwavering until his last day. Sadly, Mr. Hussein Sabbour passed away in February 2021, leaving behind a lasting legacy of innovation, leadership, and impactful contributions to the Egyptian business and engineering landscape.



1957

CO-FOUNDER **ENG. NAGWA EL-KOUSSY**

The strong, supportive Eng. Nagwa ElKoussy stands as a remarkable role model, inspiring others with her contributions and unwavering commitment to the field of engineering. She is one of the first pioneering female engineers to graduate from Cairo University, as she embodies resilience and determination.

She is one of the founders of Sabbour Consulting.

She embarked on the journey alongside Eng. Hussein Sabbour right from the inception.



Years of
Engineering

60s...

Sabbour Consulting was established by Eng. Hussein Sabbour in 1957. In the past six decades we have remained at the forefront engineering consulting firm, earning a distinguished reputation for our commitment to excellence and reliability.

We extended our presence beyond Egypt by establishing our first office in Libya with a strong dedication to cater wider range of clients, the company expanded its operations. This expansion led to our prominent recognition in Libya, where it actively participated in numerous projects.



70s...

The vision of Eng. Hussein Sabbour and dedication to excellence have had significant impact on the infrastructure and transportation network of various cities. In the 70s the firm witnessed an expansion in its client portfolio, working with a diverse range of clients from various sectors and actively sought of collaborations and partnerships.

80s...

Sabbour Consulting was commissioned by the government to develop master plan for new cities i.e., 6th of October, new Beni Seif, ... The master plan included the development of residential, commercial, and industrial areas, as well as the creation of public spaces, parks, and community facilities



90s...

We embarked on a remarkable expansion journey across Africa, spanning from Mauritania to Ghana to Mali. We also played pivotal role in the development of Egypt's transportation network, specifically in the establishment of Metro Lines 1 and 2.

2000...2010

We played an important role in shaping the urban landscape of Cairo and other cities in Egypt, and have helped to meet the growing demand for high-quality housing in the country. The firm's expertise in residential design and construction has made it a trusted partner for developers and investors looking to create successful and sustainable residential projects in Egypt and beyond.

We were involved in the master planning and development of new cities i.e., Sadat City. Through its involvement in the planning and development of these new cities, Sabbour Consulting played a key role in the growth and development of Egypt's urban landscape, helping to create vibrant, sustainable communities that have become important centers of economic and social activity..



2011...2020

The firm has a long history of working with government agencies and public sector clients, and has been involved in a wide range of infrastructure and public sector projects i.e. New Capital City: Sabbour Consulting was involved in the master planning and development of Egypt's new administrative capital city, which is being built to alleviate congestion in Cairo and to provide modern infrastructure and services.

Alamein New City: Sabbour Consulting was involved in the master planning and development of Alamein New City, a new city located on Egypt's northern coast that is being developed to boost tourism and economic development in the region.

-The establishment of Oman office. Sabbour Consulting's expansion reflects the firm's commitment to growth, innovation, and excellence in the consulting industry.

-Sabbour Consulting was affirmed as a house of expertise.

2020-2023

Despite of the pandemic, Sabbour Consulting is one of the engineering consultancy firms that has been contracted by the Egyptian government to provide design and engineering services for the El Dabaa Nuclear Power Plant, which is the first nuclear power plant in Egypt. The El Dabaa Nuclear Power Plant is located on the Mediterranean coast, in the Matrouh Governorate.

-Sabbour Consulting's expansion in the Gulf and Africa regions is driven by several factors, including increasing demand for its services in these markets, the firm's reputation for quality work, and its focus on innovation and technology.



Global Presence

GEOGRAPHICAL PRESENCE



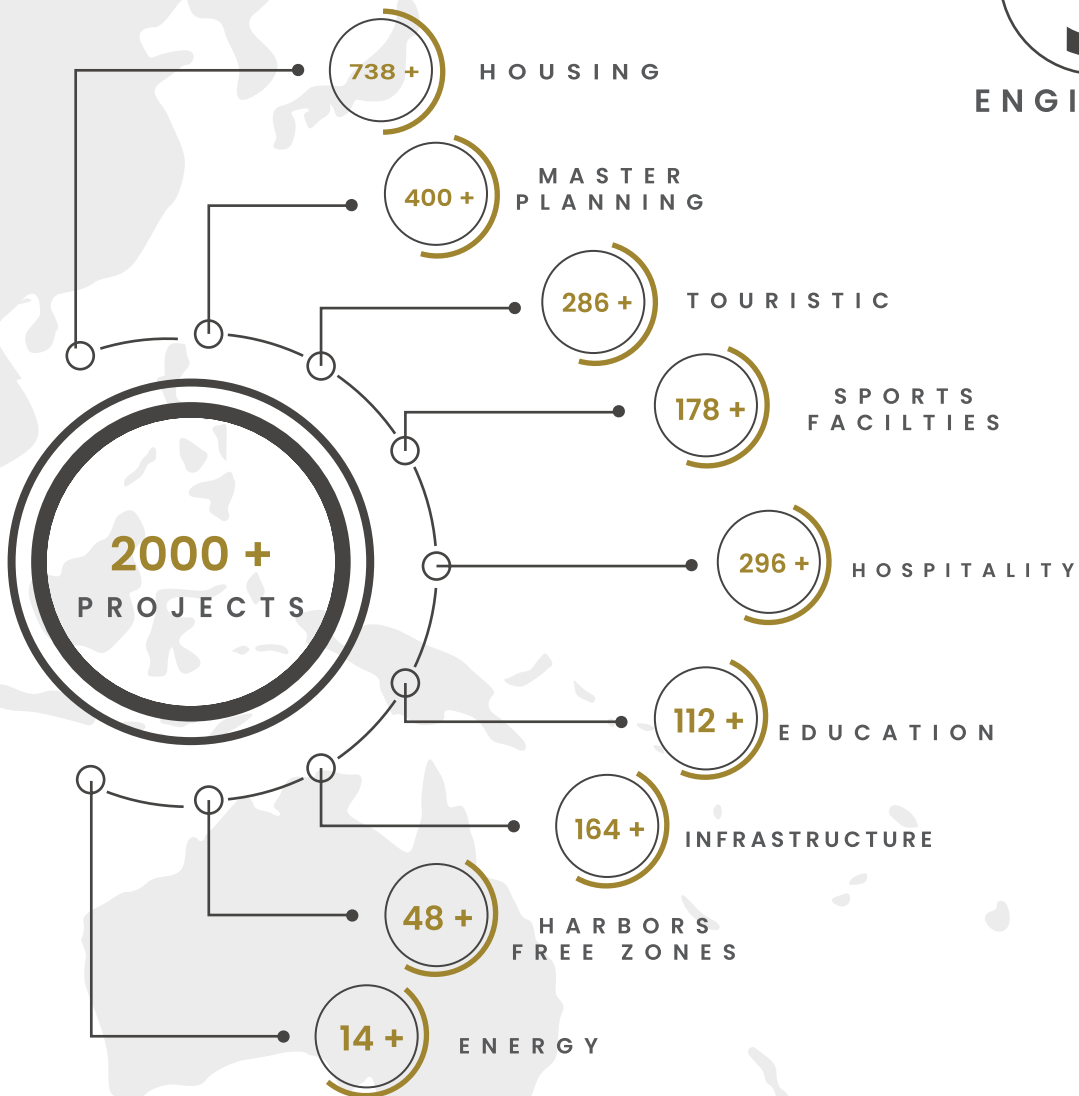
Sabbour in Numbers



C L I E N T S



E N G I N E E R S



Our EXPERTISE

01

Design Services

Design has always been a top priority for Sabbour Consulting. Our entity is highly specialized in producing outstanding designs. We succeed in achieving maximum functional efficiency by taking the surrounding economic aspects, balance, and integrity of an ecosystem into consideration. Sustainable design and value engineering are our approaches for long-term consumer satisfaction and environmental conservation. Our main disciplines are architecture, structure, urban & landscape, Infrastructure and MEP

02

Construction Supervision

We are committed to delivering high-quality construction supervision services. The role of Sabbour Consulting is to avoid delays and lapses, achieve operational goals, improve the ROI of the building, and make the construction process more effective. Sabbour Consulting helps you anticipate issues before they become expensive and time-consuming. Our teams work with the skill to reduce technical risks, prevent construction errors, control budgets and meet project deadlines. To maintain quality control, we regularly audit site teams to ensure the procedures are followed

03

Project Management

Our technical Engineering experts have leadership, interpersonal skills, and strong communication play an important critical role that involve planning, coordination and execution to oversee all aspects of the project to make sure the project is completed on time and within budget and to the required quality standards.

04

Valuation & Development Consultancy

The process of determining the economic worth or value of various assets, projects, or businesses within the context of engineering and technical expertise

Building Information Technology

Sabbour Consulting leverages cutting-edge BIM technology to enhance workflow, boost productivity, and ensure high-quality outputs that meet industry and international standards. Our implementation of BIM enables efficient project management and harnesses the power of site construction simulations for effective time and cost management. By seamlessly integrating BIM with cloud technology, we achieve business resilience, enabling streamlined collaboration and data sharing. Through this innovative approach, Sabbour Consulting optimizes project outcomes while staying at the forefront of technological advancements.

Our Sectors

- Residential
- Commercial & Mixed Use
- Sports & Leisure Facilities
- High Rise
- Infrastructure
- Transportation
- Public Building
- Hospitality
- Health Care
- Education
- Banking
- Industrial

01 Residential

We have played a significant role in shaping and contributing in residential projects in Egypt and other regions. Our role typically encompasses several aspects of the project lifecycle. From luxury condominiums to suburban housing communities, and from urban high-rises to villa compounds, Sabbour Consulting has demonstrated their prowess in contributing to all forms of residential endeavors.

The Ridge



Plot Area: 220 Acres

Scope: Design, Technical Coordination, Design works including design development, Infrastructure networks, Permit drawings, Detailed design, Tender documents.

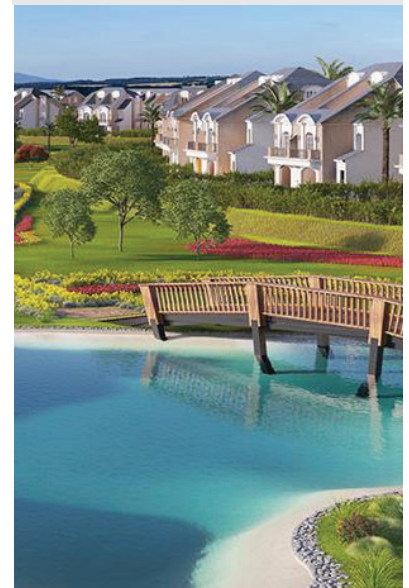
Neom Residential Community 1,2



Plot Area: Community 1: 401,000 m²
Community 2: 800,000 m²

Scope: Full Design Services incorporating various components including kitchens, laundries, healthcare facilities, LEED design, BIM models and GIS integration, all while adhering to NEOM standards.

Layan



Plot Area: 227 Acres

Scope: Design, Design coordination, Architectural design review, Permit drawings, Detailed design, Tender documents, Construction supervision.



J'noub

Plot Area: 39 Acres

Scope: Design Electrical Design, Sanitary and Air-conditioning Works For Buildings. HVAC, Fire Fighting, Lighting, Power, Fire Alarm, Sound, CCTV... Etc.)Electrical & Communication Networks (Infrastructure), Irrigation & Lighting System



City of Odysia

Plot Area : 560 Acres

Scope : Design, Construction Supervision, Technical Coordination, Design Development, Infrastructure Networks, Permit Drawings, Detailed Design, Tender Documents.



Cleopatra Town

Plot Area : 20.7 Acres

Scope : Design, Development of the concept design, Schematic design, Permit drawings & license phase.



Rukan

Plot Area : 62 Acres

Scope : Design, Design Development, Detailed Design, Tender Documents.

Prime Location in Dubai

02

Commercial & Mixed Use

We have made a significant impact in the commercial and mixed-use building, showcasing their proficiency in creating dynamic and versatile spaces. Our involvement in these projects underscore our expertise in seamlessly blending different functions which results in innovative and functional spaces that enhance urban environments.

Mindhaus

Plot Area: 60,000m²

Scope: Construction Supervision for Civil, finished and MEP works.

Components: Modular office buildings consist of stand alone, twins and quarters office buildings.



Mastro Mall

Plot Area: 9.500 m²

Scope: Design, Construction Supervision.

Components:

Ground Floor designated for Commercial purpose with foot print of 1570 m², In addition to 5 Commercial floor.

Fountana Mall

Plot Area: 7.75 Acres

Scope: Design

Components:

2 basements,
Ground floor,
11 typical floors designated for Medical & Administrative activities.





Zaha Mall

Plot Area: 9.500 m²

Scope: Design,
Construction Supervision,
Preliminary design,
Schematic design,
Permit drawings,
Detailed design,
Tender documents.

Components: 3 Underground parking,
Ground commercial floor,
2 typical commercial floors,
7 office and administrative floors,
Service area and landscape,
Fences and gates.

One Ninety

Plot Area: 7.75 Acres

Scope: Project Construction Management,
Construction supervision.

Components: Five office buildings,
Retail shopping center,
5 stars hotel,
4 stars hotel.



Three Sixty

Plot Area: 9.500 m²

Scope: Construction Supervision

Components: The project includes retail
spaces, offices, clinics and serviced apartments.



03 | Infrastructure

We have a crucial role in the domain of infrastructure development, demonstrating the proficiency in establishing fundamental systems and structures that form the contemporary societies. Our engagement in infrastructure projects spans a diverse array of roles, underscoring their substantial contributions to enhancing connectivity, sustainability, and the overall progress of communities.



Installation of Navigation Equipment for 21 Airports

Scope : Design, Construction Supervision Site, assessment Topographic survey and Geotechnical Investigations, EIA (Environmental Impact Assessment), Design adjustment to local norms and regulations, Civil works design (steel towers of different heights and technical buildings) Electrical and communication system design, Permits drawings preparation, Preparation of technical specifications Preparation of BOQs and Tender documents.



Container and Cargo Terminal in the Second Basin

Plot Area : 28.7 Acres

Scope : Design, Construction Supervision, Masterplan Review, Technical support for dredging and land reclamation, Design review for marine structure, buildings, facilities and infrastructure, etc..



Infrastructure Networks for North-west area at New Alamein city

Plot Area : 3510 Acres

Scope : Design, Site Survey, Traffic studies, Schematic Designs, Detailed Designs, Tender Documents.



Teda Industrial Zone

Plot Area : 518 Acres

Scope : Construction Supervision

Components:

Roads, Water and sewage, Medium voltage, Roads lighting, Transformers, Telecommunication.

04 Transportation

We have taken an active role in the transportation sector, making notable contributions in the improvement and functionality of transportation systems and we have been dynamic participant in the transportation sector, exerting substantial influence on the refinement and effectiveness of transportation systems.



TIKONKO JUNCTION AND MATTRU JONG ROAD

Scope : Design

Construction Supervision of Tikonko Junction and Mattru Jong 72.5 KM road.

Sabbour Consulting is in charge of upgrading and reconstruction of Tikonko Junction and Mattru Jong road located in Sierra Leone in West Africa with a total length of 72.5 KM.

Prime Location in Sierra leone - West Africa

Rehabilitation of Metro line 1

Scope:Construction Supervision,
Construction Project Management.



Cairo UnderGround Metro line 2& 1

Scope:Construction
Project Management,
Construction Supervision,
Site works management ,
Civil works, Dewatering and MEP
works.

05 Public Buildings

We actively partnered with the Egyptian government, demonstrating our dedication to the development of public buildings. Our engagement is evident in the conception and execution of notable public structures, emphasizing our contribution to shaping impactful community spaces.

Cluster Incubator Project

Plot Area: 4791.6 m²

Scope: Design,
Concept design studies for 2 prototypes,
Detailed design,
Cost Estimation.



Investment Building

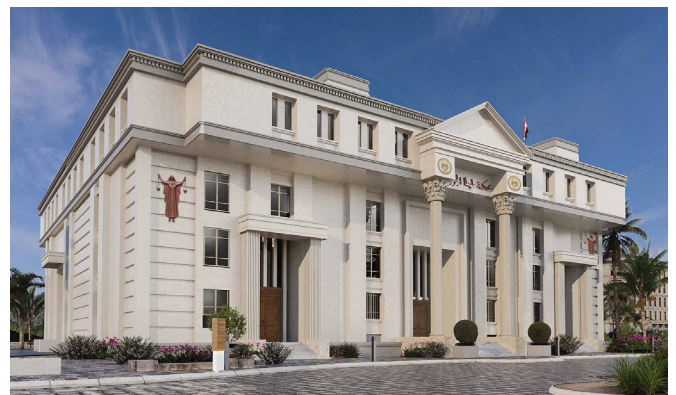
Built up Area: 8380 m²

Scope:
Design,
Construction Supervision.

Tahta Court

Plot Area : 2600 m²

Scope : Design,
Construction Supervision.





The Council of Ministers

Plot Area :60702.8 m2

Scope : Concept Design,
Preliminary Design,
Permit Drawings,
Detailed Design,
Interior Design,
Tender Documents,
Construction Supervision.



Elsaff Court

Plot Area :4037 m2

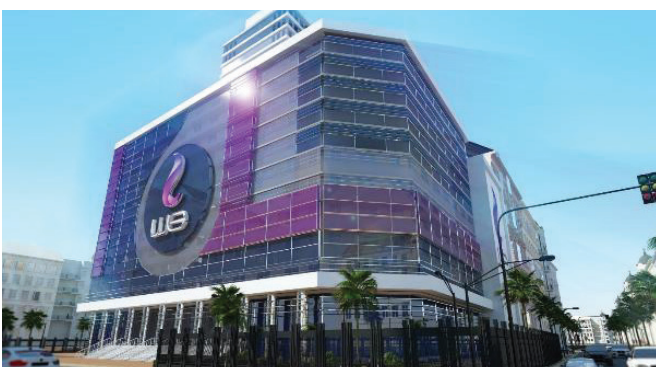
Scope : Design,
Construction Supervision.



WE Telecom Egypt

Plot Area :2600 m2

Scope : Design,
Data collection,
Detailed design (Architectural,
Structural, MEP, Interior),
Tender document,
Tendering proses administration



06 High Rise

We established a notable presence in the realm of high-rise architecture and engineering, exemplifying extensive engagement in a multitude of tower projects and demonstrated our expertise in designing, planning, and engineering these iconic vertical landmarks.



Ajaweed Tower

Built up Area: 3 Underground basements
Ground floor (commercial area)
3 mixed-use floors
11 typical residential floors

Scope: Design, Construction Supervision.



Ivory Plaza

Plot Area : 6216,33 m2
Components:
Basement,
Ground Floor,
7 floors.

Scope: Construction Supervision

Misr El Nile Tower

Built up Area: 400,000m2
40 floors (Hotel, residential and commercial)

Scope: Design





H Tower

Plot Area: 4,511 m2
 3 basement floors all over the area
 Ground and first, second and third floor designated for commercial activities (Core and shell)
 From the 4th till the 12 floor designated for administrative activities (Fully Finished) floors

Scope: Design



Continental Tower

Built up Area: 41156.0467m2

Scope: Project Management

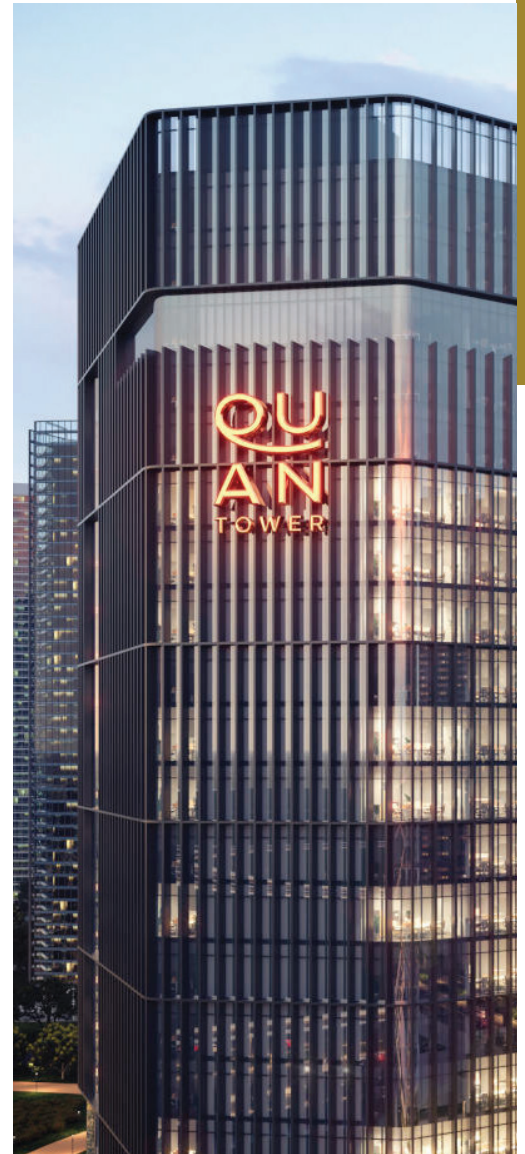
Prime Location in Dubai



Sama Tower

Built up Area: Basement, ground, mezzanine and ten floors

Scope: Design, Project Management, Construction supervision.



Quan Iconic Tower

Plot Area: 10,510 m2

Ground floor and two floors for shops, and 22 floors designated for medical clinics and administrative offices with an open view on two large gardens

Scope : Construction Supervision

07 Hospitality

We have played a notable role in the hospitality and second homes sector, showcasing our expertise in exceptional. Our involvement in this realm encompasses a diverse range of functions, underscoring our significant contributions to creating luxurious and welcoming spaces for travelers and those seeking secondary residences.

Sofitel



Plot Area :10,000 m²

Scope: Project Management,
Construction Supervision.

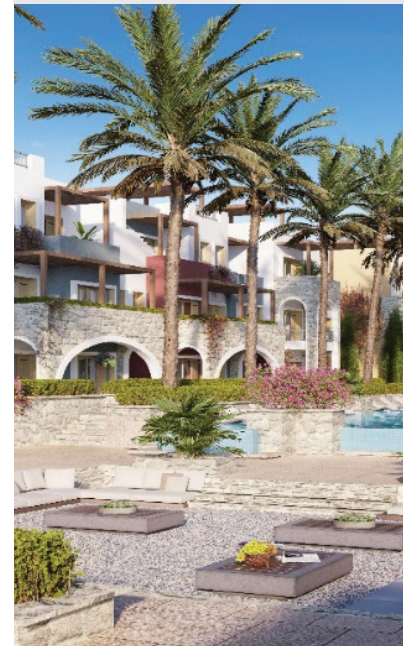
Semiramis



Plot Area :7350 m²

Scope : Design,
Project Management,
Construction supervision.

Bay Village



Plot Area :17.3 Acres

Scope : Design,
Construction Supervision.



Hawaii

Plot Area :20,234,3 m2

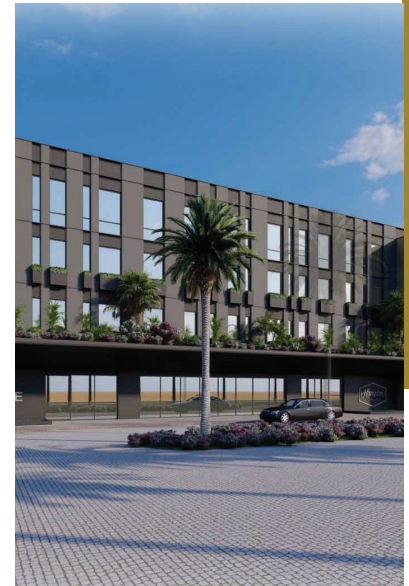
Scope : Design,
Design review,
Tender Administration,
Construction supervision.



Amwaj

Plot Area : 2,136,740 m2

Scope : Design,
Construction Supervision,
Master plan,Concept design,
Detailed design,Tender documents
Construction supervision.



Hampton by Hilton

Plot Area : 13,500 m2

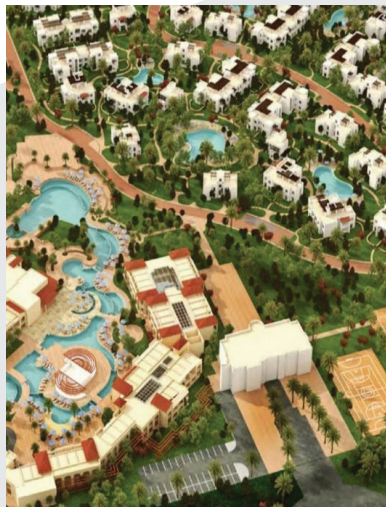
Scope : Design,
Construction Supervision
,Developed Design,
Detailed Design,
Tendering stage and IFC,
BIM Model,
Technical Support During,
Construction Works.
Prime Location in Neom- Saudi
Arabia



Topaz

Plot Area: 105,218 m2

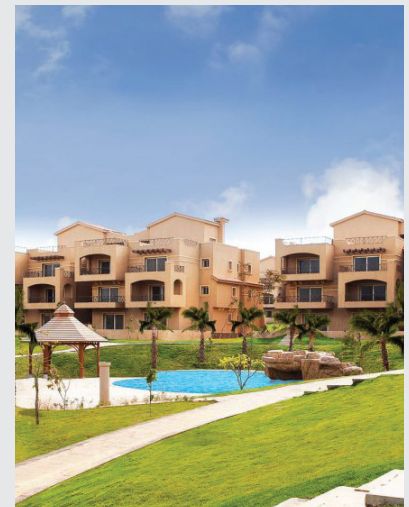
Scope: Design,
Construction Supervision.



Sunterra

Plot Area: 190,202 m2

Scope:Project management,
Construction supervision.



Piacera

Plot Area : 315,655 m2

Scope :Project management,
Construction supervision.

08 Health Care

Extension of German Hospital

Scope : Design, Construction supervision, Design review, Design amendment and completion, Permit drawings, Tender documents.



Egyption Electricity Organization Hospital

Plot Area: 2.5 Acres

Scope: Design, Project Management, Construction supervision, Master planning, Architectural design, Interior design, Structural design, Electromechanical systems design, Tender documents.



Ain Shams Hospital

Plot Area: 17.3 Acres

Scope: Design, Project Management-Construction supervision, Master planning Architectural design, Structural design, Preparation of technical specifications, Electromechanical systems design, BOQ and Tender documents Detailed drawings, Interior design Supervision of construction works.



Extension of Abbassia Fever Hospital

Scope: Design, Project Management, Construction supervision, Architecture Drawing, Interior Design, Structural design, MEP Drawings, Communications Systems design, Detailed design, Tender documents.

09 | Education

Expertise in shaping educational environments that foster effective teaching and learning.

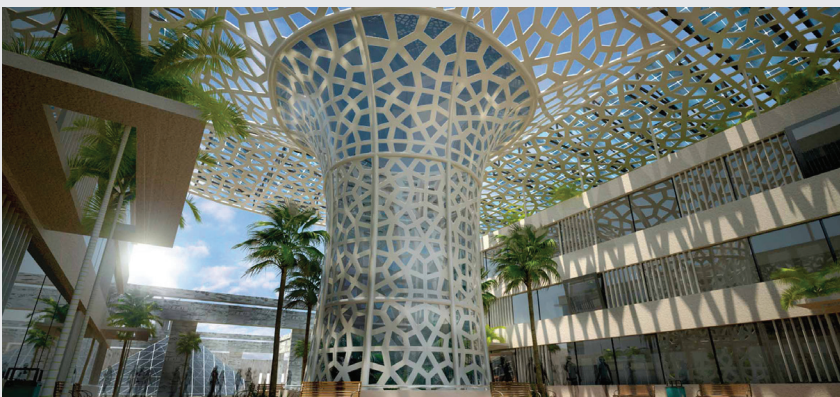
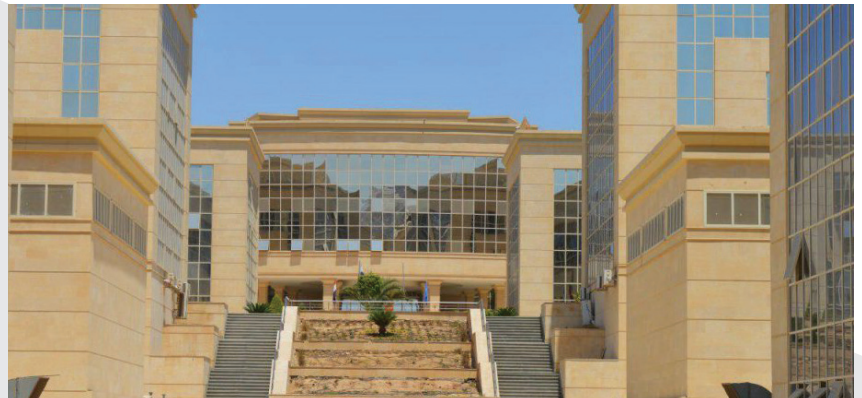


Arab Open University - Sherouk Branch

Scope : Design, Construction supervision, Master Plan, Concept design, Preliminary design, Permit drawings, Design development, Tender documents, Tendering process administration.

National Training Academy

Scope : Design, Assessment of existing building, Elaboration of upgrading program, Detailed design for upgrading works, Detailed design for new buildings, Construction supervision.



Sinai University - AL Obour Branch

Scope : Design, Master plan, Concept design.

10 Sports & Leisure Facilities

Our involvement in a lot of huge and major sports facilities which highlighted our contribution in the design and advancement of athletic venues, fostering environments that support physical activities and recreational pursuits.

Al-Ahly Sporting Club

Branches:

New Cairo,

Nasr City,

6th of Octobar.

Scope : Design,
Construction Supervision.



Platinum Club

Plot Area :113312 m2

Scope : Project Management,
Construction supervision.

Components:

Club house and Cinemas-Swimming pools
Health Club , Football court with amphitheater
Different courts,Equestrian with main arena and
training area overlooking the horses area
Food court , Fighting playgrounds with an area of
28 acres.



The Egyptian Shooting Club

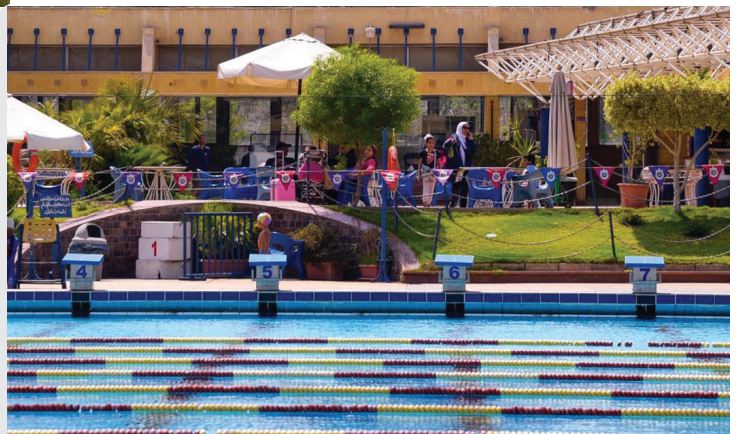
Branches:

Dokki,

Kattameya,

6th of Octobar.

Scope : Design,
Construction Supervision.





Heliopolis Sporting Club

Plot Area: 222577 m²

Scope: Project Management
Construction supervision

Components:

10 tennis courts, Basketball playground, Volleyball playground- Handball playground
Olympic Football ground with stadium, Olympic swimming pool & diving pool
Locker rooms, Social building, Administration building, Workshops
Parking.

International Shooting Club

Plot Area : 667731 m²

Scope : Construction Supervision,
Preliminary design,
Permit drawings,
Detailed design,
Tender documents.

Components:

10 Shooting Arenas. 6 Electronic Shooting guns Arenas 2
Arena for the Bow and Arrows
4 Arenas For the manual shooting
The Ceremony Zone and Ceremonies building, with an area of 35 acres . Administrative zone with an area of 8 acres
The hotel with an area of 41.5 acres . The commercial zone with an area of 28 acres



Alex West Club

Plot Area : 121406 m²

Scope : Design,
Concept design,
Master planning,
Preliminary design,
Detail design,
Tender document,
Construction Supervision.

Banking

In the banking sector, Sabbour has played a substantial role, bringing their expertise and insights to the financial industry. We have contributed in diverse and huge banks.



CIB Data Center

Scope : Construction Supervision,
Peer review,
Technical control,
Progress control,
Quality control,
Preparation of reports,
Project Handing Over.



Afrexim Bank

Scope : Design,
Construction Supervision,
Design Validation,
Redesign of building engineering
systems-Interior design,
Tender documents,
Tendering process administration.



National Bank of Egypt

Scope : Design,
Construction Supervision,
Preliminary design,
Detailed design,
Tender documents.

12 Industrial

Sabbour has played a vital role in a wide range of industrial projects. Our expertise and dedication have been reason in the success of these initiatives. Whether in manufacturing, construction, technology, or any other industry. We have contributed consistently to demonstrate our valuable insights and skills. Our commitment in excellence and problem-solving abilities have left a lasting impact on these projects, which made us highly regarded in the industrial field.



L'azurde Egypt

Scope : Design,
Structural assessment of existing building to assure structural safety,
Construction supervision.



Polyethylene Pipes Factory

Scope : Design,
Feasibility study,
Preliminary Design,
Permit drawings,
Detailed Design,
Tender documents,
Construction supervision.

Shell Lobb- Cairo new facilities building project Gold LEED Certified

Built up Area:800 m2

Scope:

Concept Design,
Preliminary Design,
Detailed Design,
Tender Documents,
Construction Supervision.



ISO Certified



Contact Us

Branches

Egypt Branch: Arkadia Mall, 8th floor, Nile Corniche, Cairo, Egypt.

Oman branch: South Al-khuwair/ Bousher/ Muscat Government

London branch: Dept 2844a 196 High Road, Wood Green, London, United Kingdom. N8 22HH

Email Address: Info@sabbour.com **Phone:** +(202)25749786 **Website:** www.sabbour.com



House of
Expertise



www.sabbour.com